

2012 South West Regional Skills Canada Competition

Scope Document

Lethbridge College – TR 1841

April 19, 2012

EVENT: Cabinet Making	LEVEL: Secondary
TIMES: Check-in: 7:30 am at the Canbra Room Orientation: 7:45 am Competition Start Time: 8:00 am – 2:30 pm (includes 30 minute lunch)	LOCATION: Lethbridge College - TR 1841
DURATION: 6 Hours	REGIONALIZED: Yes
Number of Competitors That Will Qualify for the 2012 Provincial Skills Canada Competition: 2	

GENERAL DESCRIPTION

The Skills Canada Alberta regional cabinet making competition sees competitors build a provided woodworking project. Starting from provided drawings and diagrams, the project is built during the allotted construction time. The competitors are judged based on the quality of their project in the face of the judging criteria.

The competition's purpose is to provide an opportunity for contestants to demonstrate competence with, and the mastery of,

- hand tools
- portable power tools
- cutting edges
- interpretation of drawing and specifications
- joinery techniques
- problem solving

Knowledge to be tested:

- Safety
- The nature and properties of wood
- Stationary and portable woodworking tools and stationary
- Hand tools
- Methods of work
- Joinery
- Adhesives
- Abrasives

Practical skills to be tested:

- Use of edge cutting tools such as planes and chisels
- Proper layout and cutting of dovetails
- Accurate measuring
- Cutting of sheet stock with a table saw
- Proper assembly techniques using clamps and adhesives
- Interpretation of drawings and specifications
- Solving construction problems
- Time management
- Final surface preparation before finishing

EQUIPMENT & MATERIALS

NOTE: no personal electronic data devices (cell phones, portable sound systems, etc.) will be allowed in the competition area.

Equipment and Materials Supplied by the Committee:

• all wood and materials	• all adhesives	• a selection of hand sandpaper & sanding blocks
• hardware and screws	• miter saws	• table saws
• band saws	• portable drills and bits	• table routers and bits
• drill press	• planer	• pencil & pencil sharpener
• portable routers and bits	• dowels	• cordless drills and bits
• chisel mortisers	• jointer	• grinder and honing station
• workbenches	• plug cutter and matching counterbore bit	• dust collector
• band sander	• Metric tape measure	• Combination square
• utility knife	• hammer	• wooden mallet
• Robertson screw drivers	• wood chisels	• block and smooth planes
• masking or fiber tape	• measuring tools	• cabinet scraper
• sharpening stone & lubricant	• 4 x 36" bar clamps / fast action clamps	• assorted small clamps
• marking gauge	• sliding T bevel	• dove-tail saw
• safety glasses	• hearing protection	• steel toe caps

- Any personal hand-tools can be brought if preferred, but they will be supplied by the committee.

Not allowed in the competition:

- No additional power tools will be allowed.
- Students cannot bring purpose-made jigs for the project into the competition but may choose to make one in the allotted competition time. General purpose jigs are allowed.

SAFETY

The health, safety and welfare of all individuals involved with Skills Canada Alberta are of vital importance. Safety is a condition of participation with Skills Canada Alberta and shall not be sacrificed for the sake of expediency. At the discretion of the judges and technical committees, any competitor can be denied the right to participate should they not have the required proper safety equipment and/or act in an unsafe manner that can cause harm to themselves or others. **Competitors must review the attached hazard assessment.**

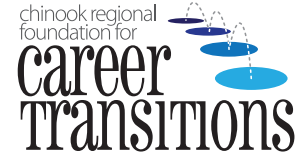
COMPETITORS MUST SUPPLY THE FOLLOWING:

- CSA Approved steel toed shoes/work boots
- CSA Approved safety glasses
- Appropriate work clothing

*CSA hearing protection will be supplied by the committee

JUDGING CRITERIA

- Use of edge cutting tools such as planes and chisels
- Proper layout of dovetails
- Accurate measuring
- Cutting of sheet stock with the table saw
- Proper assembly techniques using clamps and adhesives
- Interpretation of drawings and specifications
- Solving construction problems



- Time management
- Final surface preparation before finishing

RELATED CAREER AND TECHNOLOGY STUDIES COURSES

Descriptions of all modules are located at the following website:

<http://www.education.gov.ab.ca/cts>

CON 1010: Construction Tools and Materials

CON 1120: Product Management

CON 1130: Solid Stock Construction

CON 1160: Manufactured Materials

CON 2130: Furniture – Box Construction

CON 3130: Furniture – Leg & Rail

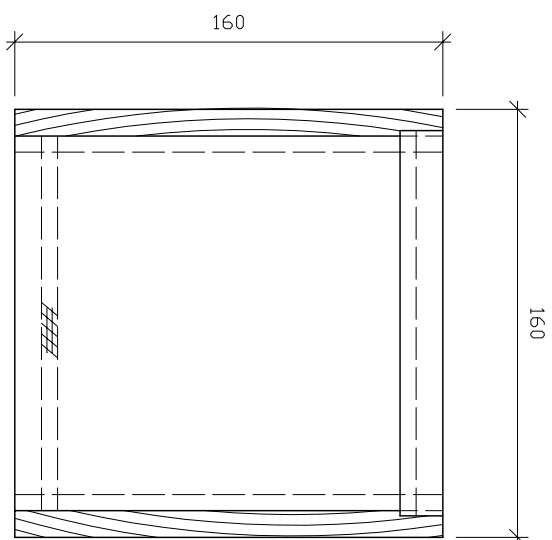
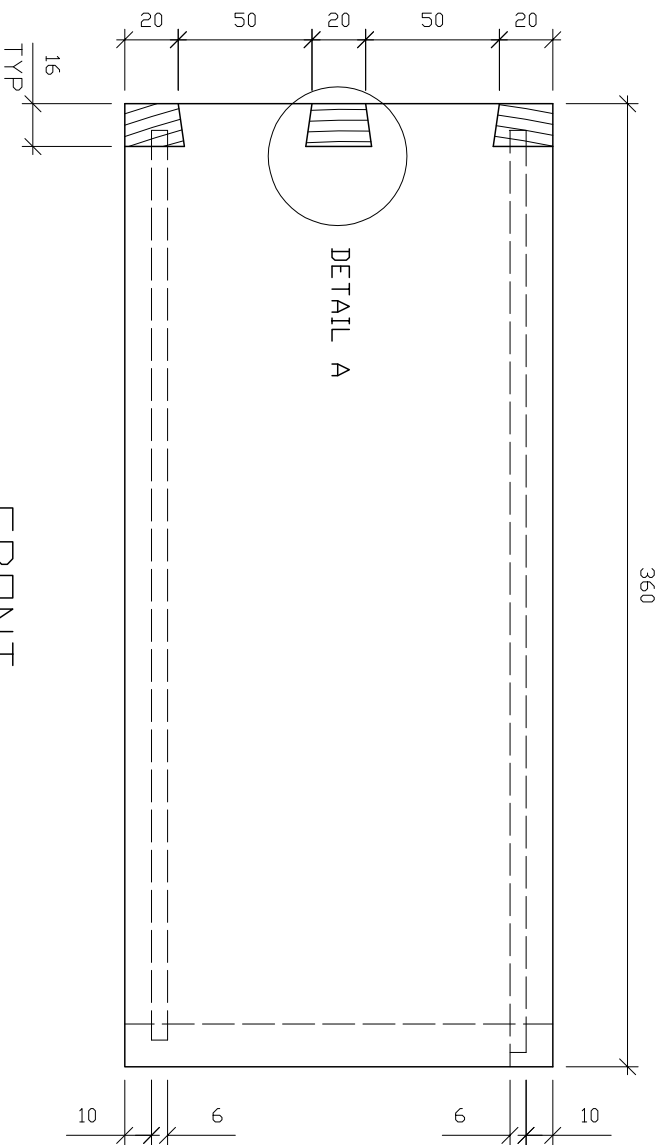
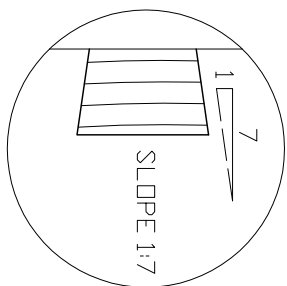
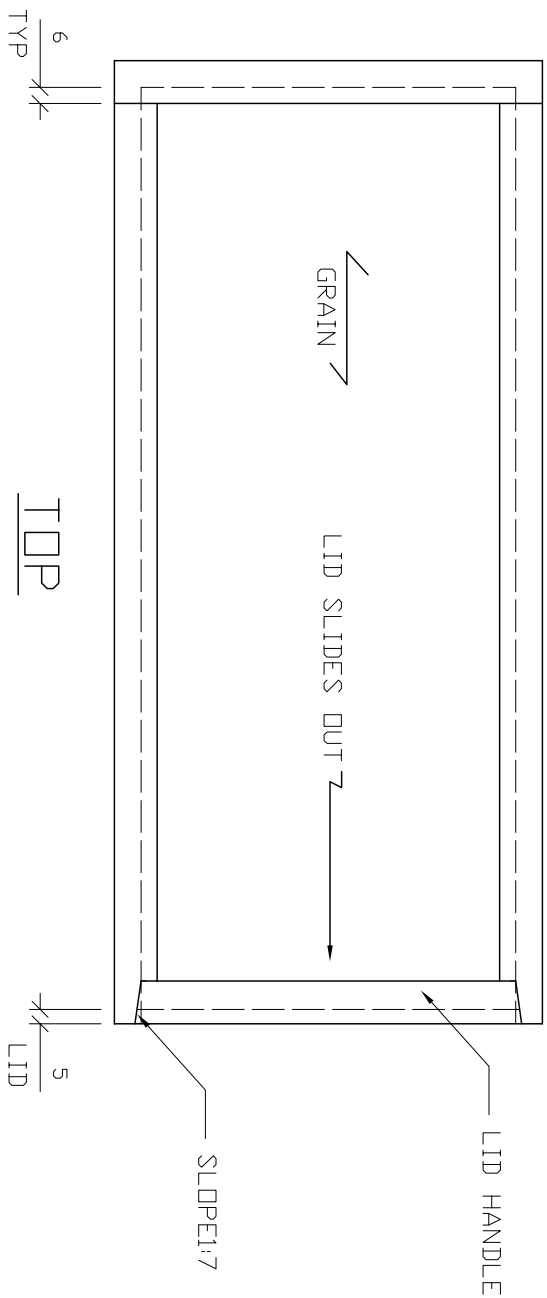
ADDITIONAL INFORMATION

Skills Canada Alberta has allocated two spots at the Provincial Competition for the gold and silver medalists from the regional competition. Should either medalist choose not to attend the Provincial Competition the spot would be offered to the bronze medalist. The provincials are scheduled for May 10 & 11 at the Edmonton Expo Centre Northlands in Edmonton, Alberta. Travel expenses and preparation for the provincials are the competitor's responsibility. Please see www.skillsalberta.com for details.

COMMITTEE MEMBERS

Marvin VandenHoek	Calvin Christian School
Lehi Heath	Lethbridge College
Leon Wensmann	Lethbridge College
Frank Pawlak	Lethbridge College
Stephen Neis	Lethbridge College
Cal Whitehead	Lethbridge College
Corby Pankhurst	Lethbridge College
Erick Stewart	Magrath High School
Mark Mousseau	The Oak Market
Margaret Vennard	Career Transitions

MATERIALS
 SIDES-ASPEN
 ENDS-MAHOGANY
 TOP/BOTTOM-PLYWOOD





Department/Faculty: Cabinet Making/Carpentry	Position: Skills Canada Competition	
Assessment completed by: Kim Harvey	Date: 2011	Revision Date:

Type of Work/Activity	Hazard Type: (Physical, Chemical, Biological, Ergonomic, Environmental)	Risk (1-3) See below				Controls in Place	Controls Needed
		Exposure	Severity	Probabilit	Total		
List all types of work done in this work area or job	List the hazards for each work related activity					Engineered Administrative Personal Protective Equipment	List if any additional controls are required for that Hazard and the date they will be in place
Shop Work	Noise, dust, slips, trips, falls, falling objects.	2	2	2	6	Hearing protection, ventilation, housekeeping, safety toed boots and appropriate work clothing.	
Using stationary power tools, (example table saw, plainer, etc.)	Cuts, pinch points, kick back (impalement) amputation, dust, eye injury, noise	2	2	2	6	Guards, touch stop, procedures, body and hand position, (line of fire), safety glasses. Only authorized personnel in work area, hearing protection, dust collector.	
Using hand power tools	Cuts, pinch points, amputation, eye injury noise	2	2	2	6	Guards, procedures, body and hand position (line of fire), hearing protection, only authorized personnel in work area, safety glasses.	
Using hand tools	Cuts, puncture wounds, crush injury.	2	1	2	5	Tools in good condition, proper tool for the job, proper hand position, eye protection	
Using air nozzle	Eye injury, injection, spreading dust, pushing dust particles into the skin.	1	2	2	5	Pressure regulated to 30 LBS., low pressure high volume nozzles, do not use air nozzle to blow dust of yourself.	

Frequency Rating:

1. Low, less than 10% of work day
2. Medium, up to 65% of work day
3. High, over 66% of work day

Severity:

1. Minor, potential for minor injury
2. Moderate, potential for lost time injury
3. Severe, potential for severe injury

Probability:

1. Low, unlikely to happen
2. Medium, likely to happen
3. High, very likely to happen

Hazard Rating:

- 3-4 Low, requires monitoring
- 5-6 Moderate, requires attention
- 7-9 High, requires immediate attention